



PIKARO
HAND MADE TILES

Cement Tiles
CATALOG





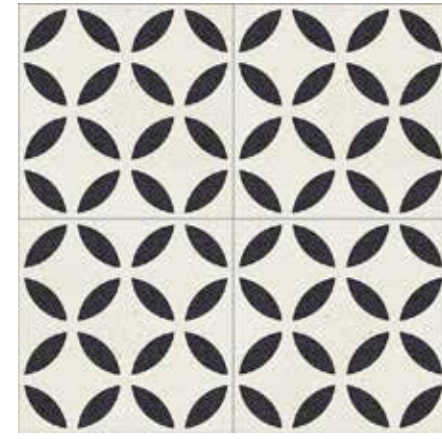
Cement Tiles

Cement tiles are created by applying intense pressure on marble powder, granules of natural stone, and color pigments. This process has essentially not changed over the centuries.

Cement tiles are never ovened; instead, they are allowed to dry naturally. Its production is entirely manual and environmentally sustainable. Cement tiles are long-lasting both indoor and outdoor usage.

Handmade cement tiles, which have become popular again today, continue to add value to many projects and our daily living spaces.

-



Item Code
Cement

PC001

20x20cm
1m² : 25 adt/piece

PC001
20x20cm



Item Code
Cement

PC002

20x20cm
1m² : 25 adt/piece



Item Code
Cement

PC004

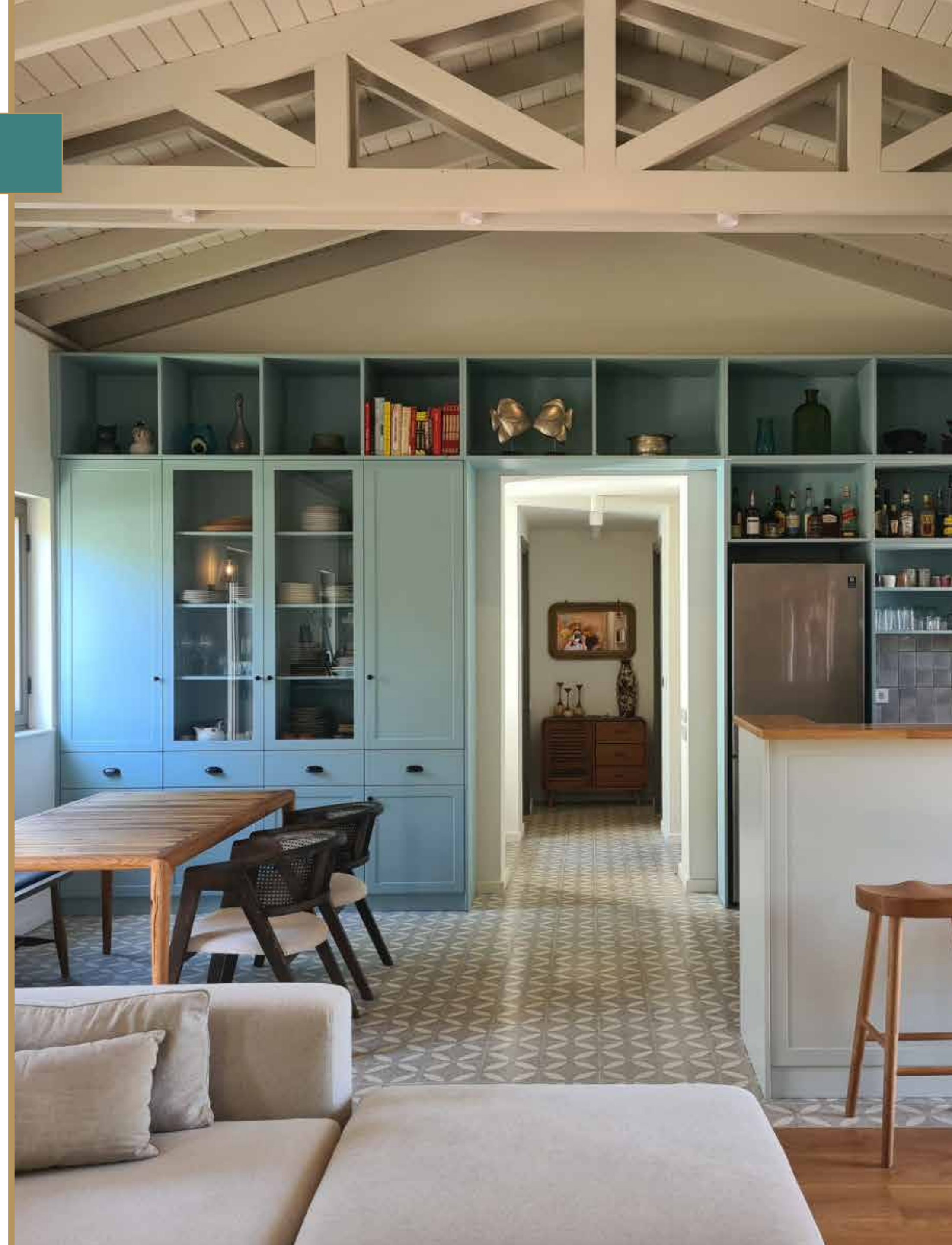
20x20cm
1m² : 25 adt/piece



Item Code
Cement

PC006

20x20cm
1m² : 25 adt/piece





PC020
20x20cm



Item Code

PC009

Cement

20x20cm

1m² : 25 adt/piece



Item Code

PC012

Cement

20x20cm

1m² : 25 adt/piece



Item Code

PC018

Cement

20x20cm

1m² : 25 adt/piece



Item Code

PC020

Cement

20x20cm

1m² : 25 adt/piece



Item Code
Cement

PC023

20x20cm
1m² : 25 adt/piece

PC023
20x20cm



Item Code
Cement

PC027

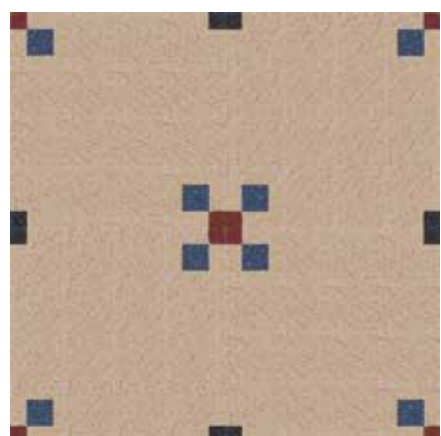
20x20cm
1m² : 25 adt/piece



Item Code
Cement

PC031

20x20cm
1m² : 25 adt/piece



Item Code
Cement

PC034

20x20cm
1m² : 25 adt/piece

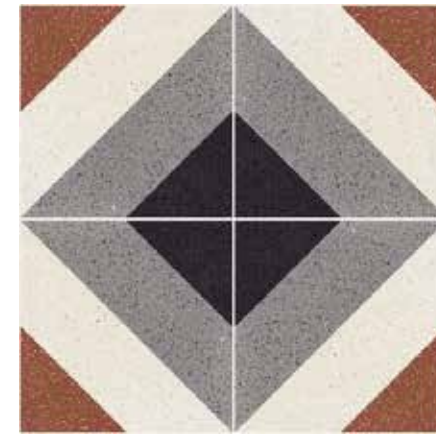




PC034
20x20cm



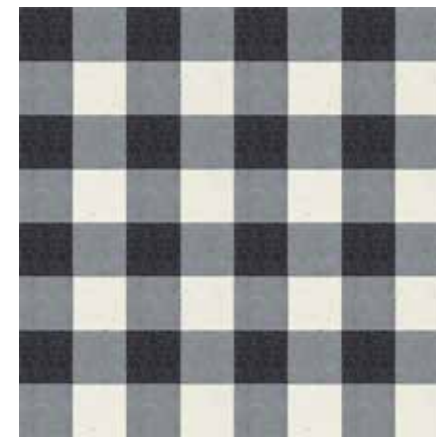
PC039
20x20cm



Item Code
Cement

PC037

20x20cm
1m2 : 25 adt/piece



Item Code
Cement

PC038

20x20cm
1m2 : 25 adt/piece



Item Code
Cement

PC039

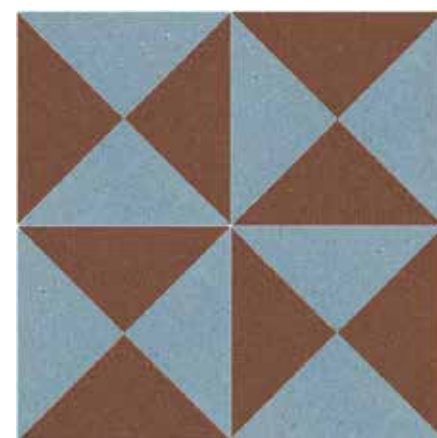
20x20cm
1m2 : 25 adt/piece



Item Code
Cement

PC047

20x20cm
1m2 : 25 adt/piece



Item Code

PC051

Cement

20x20cm

1m² : 25 adt/piece



Item Code

PC052

Cement

20x20cm

1m² : 25 adt/piece



Item Code

PC058

Cement

20x20cm

1m² : 25 adt/piece



Item Code

PC059

Cement

20x20cm

1m² : 25 adt/piece



Item Code

PC061

Cement

20x20cm

1m² : 25 adt/piece



Item Code

PC064

Cement

20x20cm

1m² : 25 adt/piece



Item Code

PC067

Cement

20x20cm

1m² : 25 adt/piece



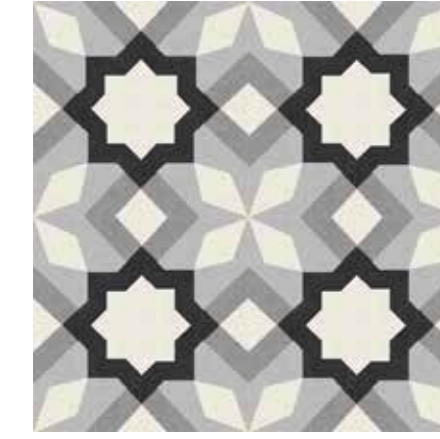
PC051
20x20cm



Item Code **PC068**

Cement

20x20cm
1m² : 25 adt/piece



Item Code **PC080**

Cement

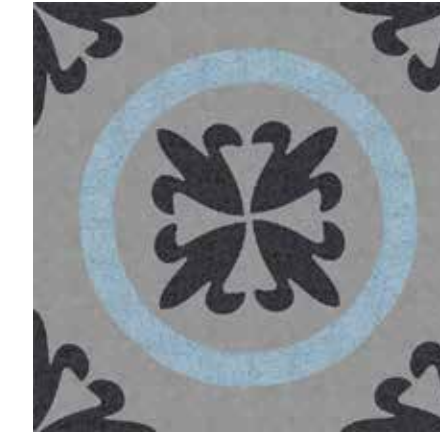
20x20cm
1m² : 25 adt/piece



Item Code **PC069**

Cement

20x20cm
1m² : 25 adt/piece



Item Code **PC081**

Cement

20x20cm
1m² : 25 adt/piece



Item Code **PC070**

Cement

20x20cm
1m² : 25 adt/piece



Item Code **PC082**

Cement

20x20cm
1m² : 25 adt/piece



Item Code
Cement

PC083

20x20cm
1m² : 25 adt/piece

PC083
20x20cm



Item Code
Cement

PC084

20x20cm
1m² : 25 adt/piece



Item Code
Cement

PC085

20x20cm
1m² : 25 adt/piece



Item Code
Cement

PC087

20x20cm
1m² : 25 adt/piece





PC090
20x20cm



Item Code **PC088**
Cement

20x20cm
1m2 : 25 adt/piece



Item Code **PC089**
Cement

20x20cm
1m2 : 25 adt/piece



Item Code **PC090**
Cement

20x20cm
1m2 : 25 adt/piece



Item Code **PC091**
Cement

20x20cm
1m2 : 25 adt/piece



Item Code PC093

Cement

20x20cm
1m² : 25 adt/piece

PC093
20x20cm



Item Code PC094

Cement

20x20cm
1m² : 25 adt/piece



Item Code PC095

Cement

20x20cm
1m² : 25 adt/piece



Item Code PC097

Cement

20x20cm
1m² : 25 adt/piece





PC094
20x20cm



Item Code PC098
Cement

20x20cm
1m2 : 25 adt/piece



Item Code PC100
Cement

20x20cm
1m2 : 25 adt/piece



Item Code PC101
Cement

20x20cm
1m2 : 25 adt/piece



Item Code PC102
Cement

20x20cm
1m2 : 25 adt/piece

PC097
20x20cm





PC106
20x20cm



Item Code
Cement

PC104

20x20cm
1m2 : 25 adt/piece



Item Code
Cement

PC105

20x20cm
1m2 : 25 adt/piece



Item Code
Cement

PC106

20x20cm
1m2 : 25 adt/piece



Item Code
Cement

PC107

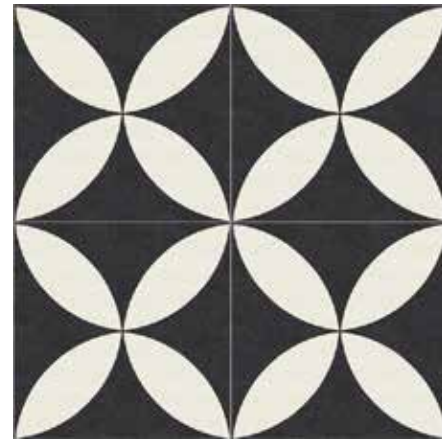
20x20cm
1m2 : 25 adt/piece



Item Code
Cement

PC108

20x20cm
1m² : 25 adt/piece



Item Code
Cement

PC109

20x20cm
1m² : 25 adt/piece



Item Code
Cement

PC110

20x20cm
1m² : 25 adt/piece

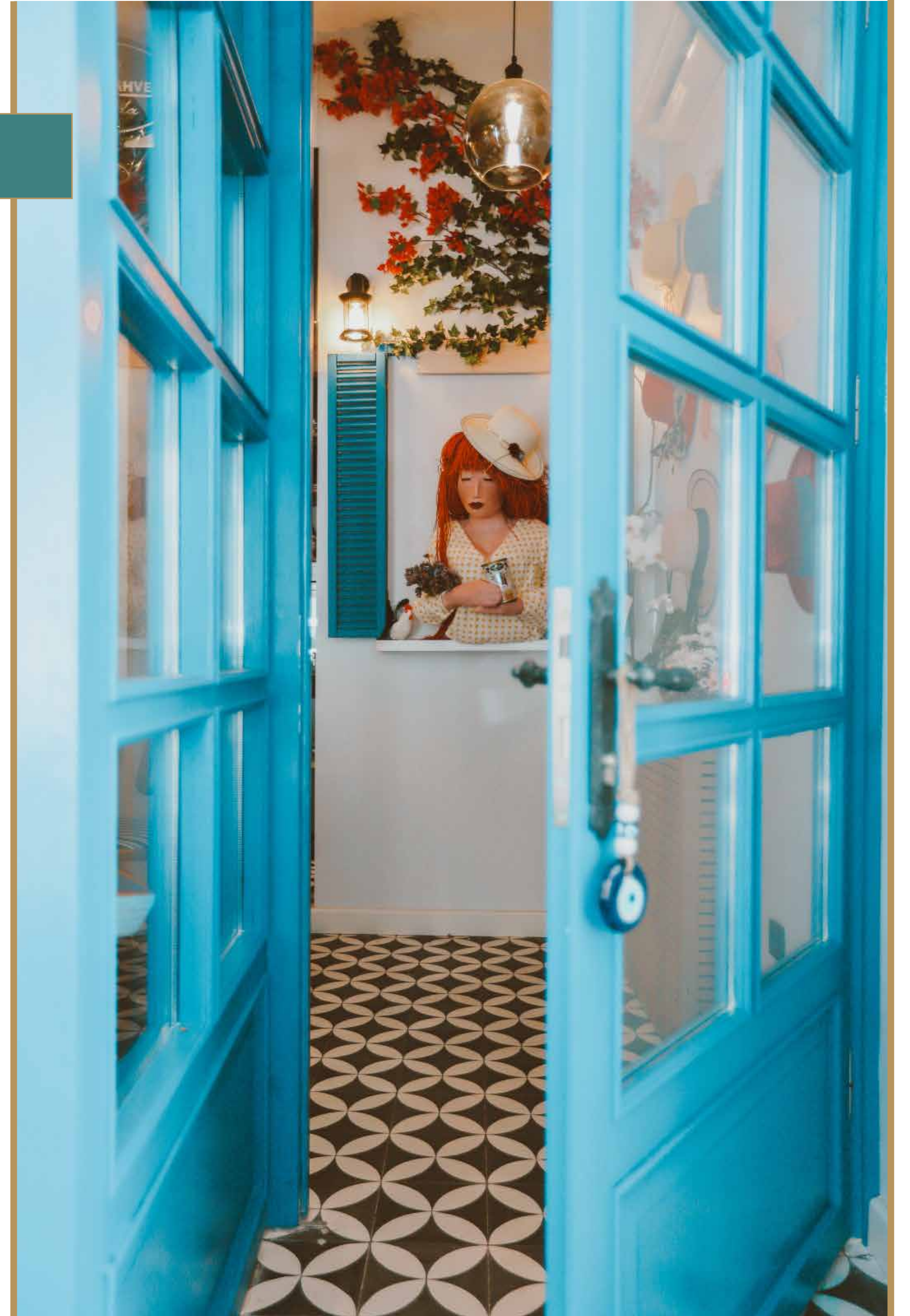


Item Code
Cement

PC111

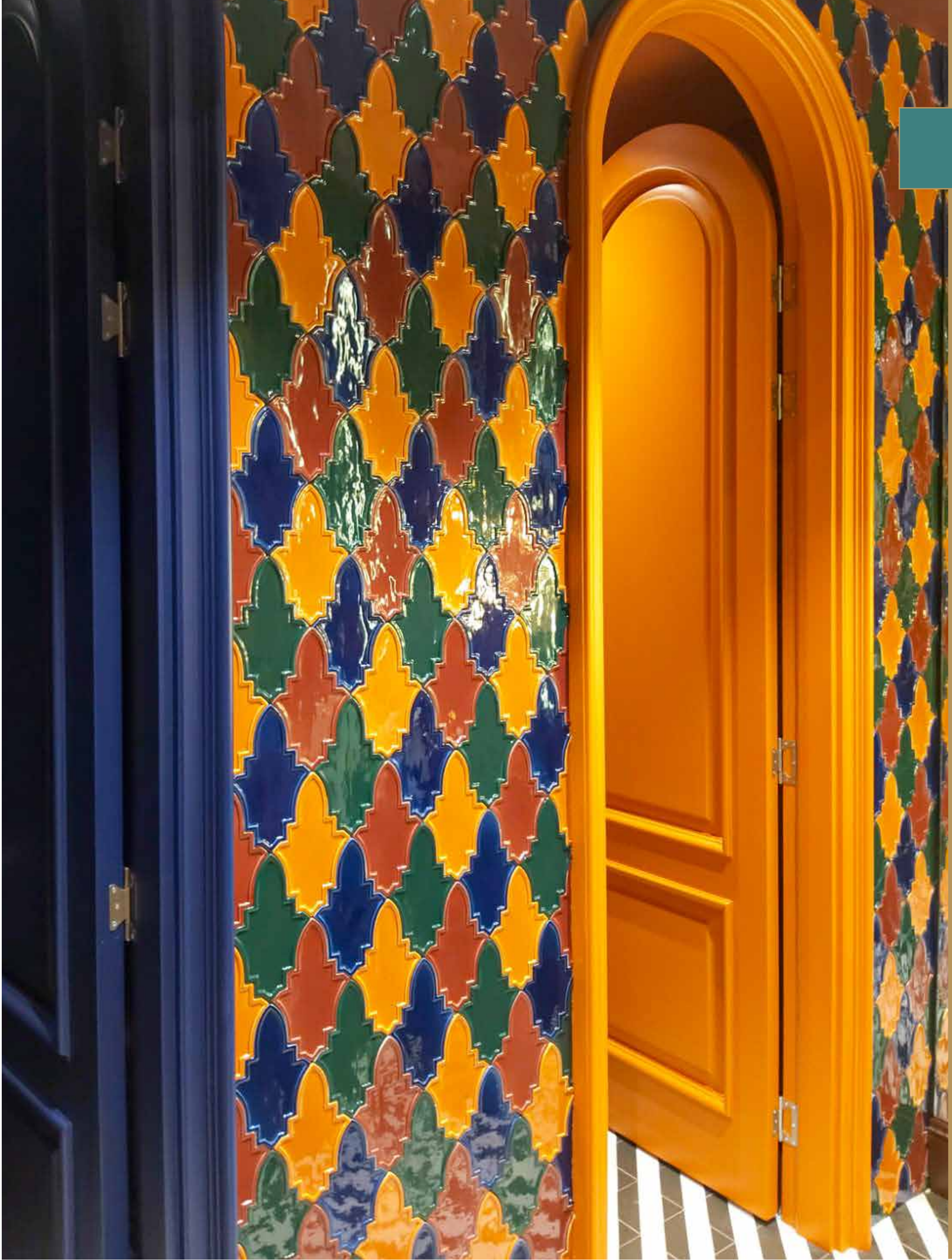
20x20cm
1m² : 25 adt/piece

PC109
20x20cm





PC110
20x20cm



PC112
20x20cm



Item Code
Cement

PC112

20x20cm
1m2 : 25 adt/piece



Item Code
Cement

PC113

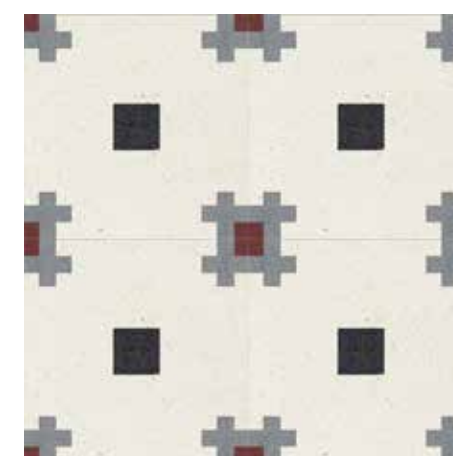
20x20cm
1m2 : 25 adt/piece



Item Code
Cement

PC114

20x20cm
1m2 : 25 adt/piece



Item Code
Cement

PC115

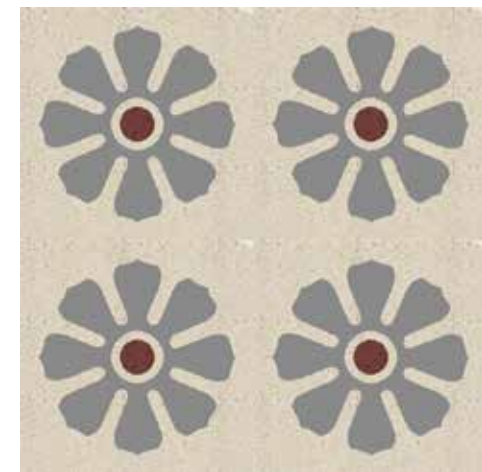
20x20cm
1m2 : 25 adt/piece



Item Code
Cement

PC117

20x20cm
1m² : 25 adt/piece



Item Code
Cement

PC119

20x20cm
1m² : 25 adt/piece



Item Code
Cement

PC120

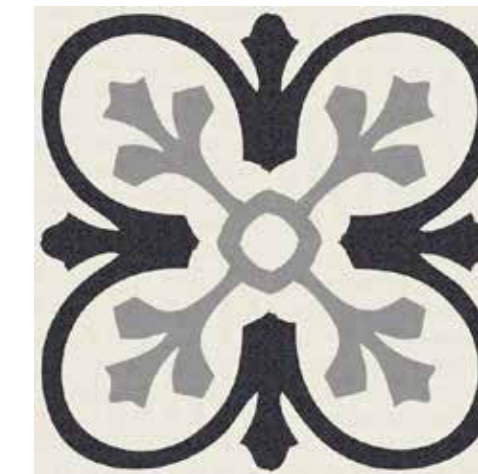
20x20cm
1m² : 25 adt/piece



Item Code
Cement

PC121

20x20cm
1m² : 25 adt/piece



Item Code
Cement

PC122

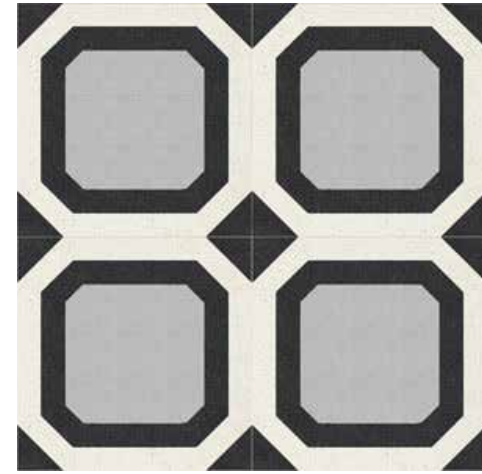
20x20cm
1m² : 25 adt/piece



Item Code
Cement

PC123

20x20cm
1m² : 25 adt/piece



Item Code
Cement

PC124

20x20cm
1m² : 25 adt/piece



Item Code
Cement

PC127

20x20cm
1m² : 25 adt/piece



Item Code
Cement

PC125

20x20cm
1m² : 25 adt/piece



Item Code
Cement

PC128

20x20cm
1m² : 25 adt/piece



Item Code
Cement

PC126

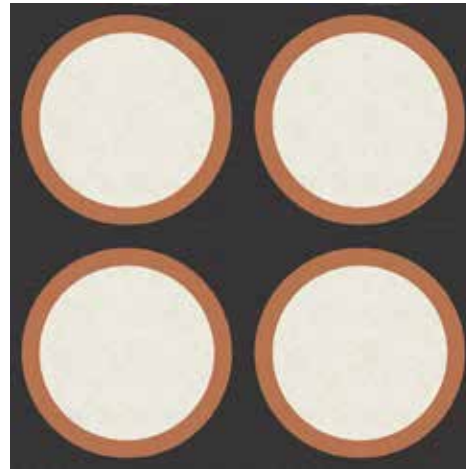
20x20cm
1m² : 25 adt/piece



Item Code
Cement

PC129

20x20cm
1m² : 25 adt/piece



Item Code PC130
Cement

20x20cm
1m² : 25 adt/piece



Item Code PC133
Cement

20x20cm
1m² : 25 adt/piece



Item Code PC135
Cement

20x20cm
1m² : 25 adt/piece



Item Code PC136
Cement

20x20cm
1m² : 25 adt/piece

PC130
20x20cm





PC138
20x20cm



Item Code
Cement

PC137

20x20cm
1m2 : 25 adt/piece



Item Code
Cement

PC138

20x20cm
1m2 : 25 adt/piece



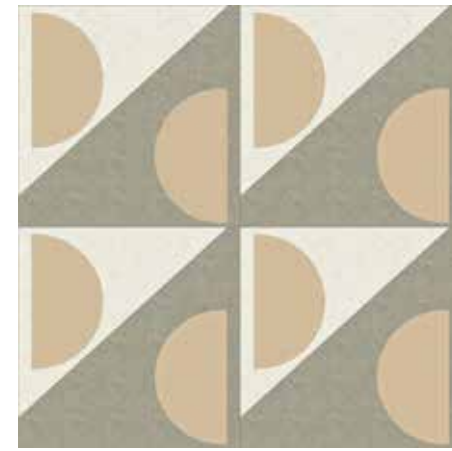
Item Code
Cement

PC139

20x20cm
1m2 : 25 adt/piece

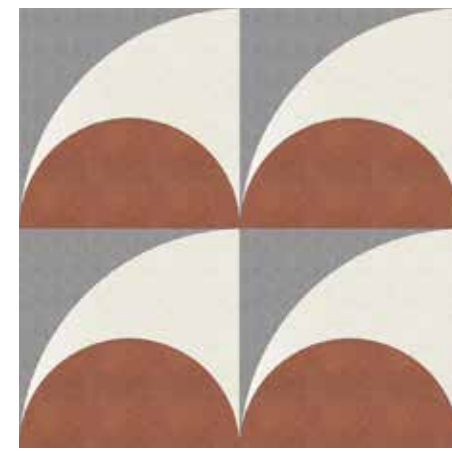


PC140
20x20cm



Item Code
Cement

PC140
20x20cm
1m² : 25 adt/piece



Item Code
Cement

PC141
20x20cm
1m² : 25 adt/piece



Item Code
Cement

PC142
20x20cm
1m² : 25 adt/piece

PC142
20x20cm



PC145
20x20cm





PC143
20x20cm



Item Code
Cement

PC143

20x20cm
1m² : 25 adt/piece



Item Code
Cement

PC144

20x20cm
1m² : 25 adt/piece



Item Code
Cement

PC145

20x20cm
1m² : 25 adt/piece

PC144
20x20cm



Hexagon Tiles



Item Code
Cement

AG01

23x20x1,8cm
1m² : 29 adt/piece



Item Code
Cement

AG02

23x20x1,8cm
1m² : 29 adt/piece



Item Code
Cement

AG03

23x20x1,8cm
1m² : 29 adt/piece



Item Code
Cement

AG04

23x20x1,8cm
1m² : 29 adt/piece



Item Code
Cement

AG05

23x20x1,8cm
1m² : 29 adt/piece

Borders



Item Code YB001

Cement

20x20x1,8cm
1m2 : 5 adt/piece



Item Code YB002

Cement

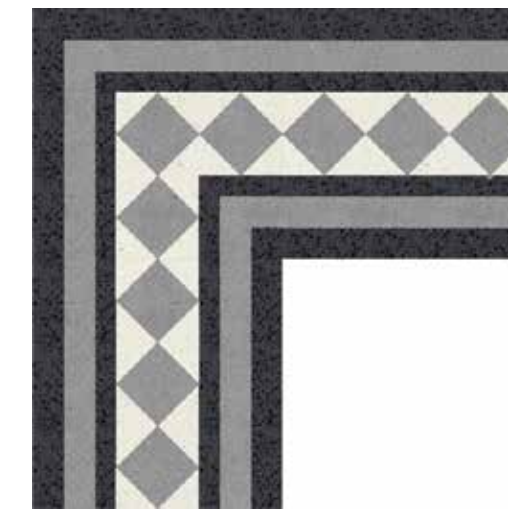
20x20x1,8cm
1m2 : 5 adt/piece



Item Code YB003

Cement

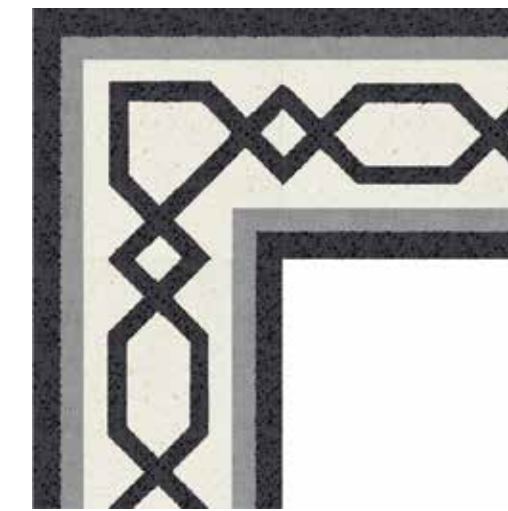
20x20x1,8cm
1m2 : 5 adt/piece



Item Code YB004

Cement

20x20x1,8cm
1m2 : 5 adt/piece



Item Code YB005

Cement

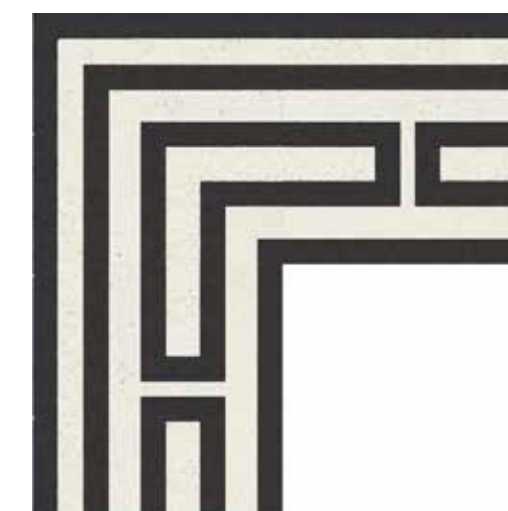
20x20x1,8cm
1m2 : 5 adt/piece



Item Code YB006

Cement

20x20x1,8cm
1m2 : 5 adt/piece

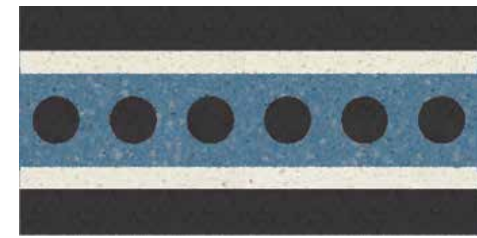


Item Code YB007

Cement

20x20x1,8cm
1m2 : 5 adt/piece

Baseboard



Item Code
Cement

YS001

10x20x1,8cm
1m2 : 5 adt/piece



Item Code
Cement

YS002

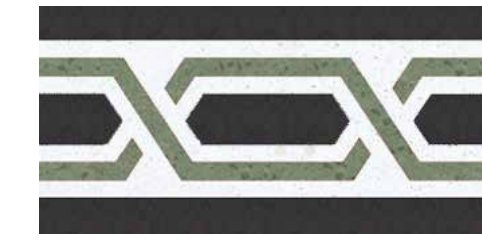
10x20x1,8cm
1m2 : 5 adt/piece



Item Code
Cement

YS003

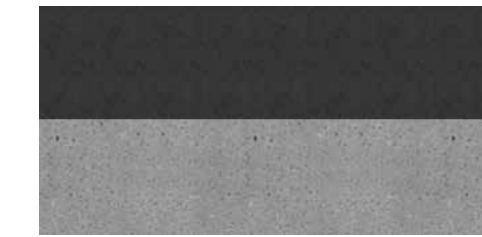
10x20x1,8cm
1m2 : 5 adt/piece



Item Code
Cement

YS004

10x20x1,8cm
1m2 : 5 adt/piece



Item Code
Cement

YS005

10x20x1,8cm
1m2 : 5 adt/piece



Item Code
Cement

YS006

10x20x1,8cm
1m2 : 5 adt/piece



Item Code
Cement

YS007

10x20x1,8cm
1m2 : 5 adt/piece



To get information about our tiles

ISTANBUL

 0 216 504 36 37

 info@pikaro.com.tr

 pikarotiles

 Acıbadem Mahallesi Sarayardı Cd.
No:30-A Kadıköy/İstanbul

pikaro.com.tr